

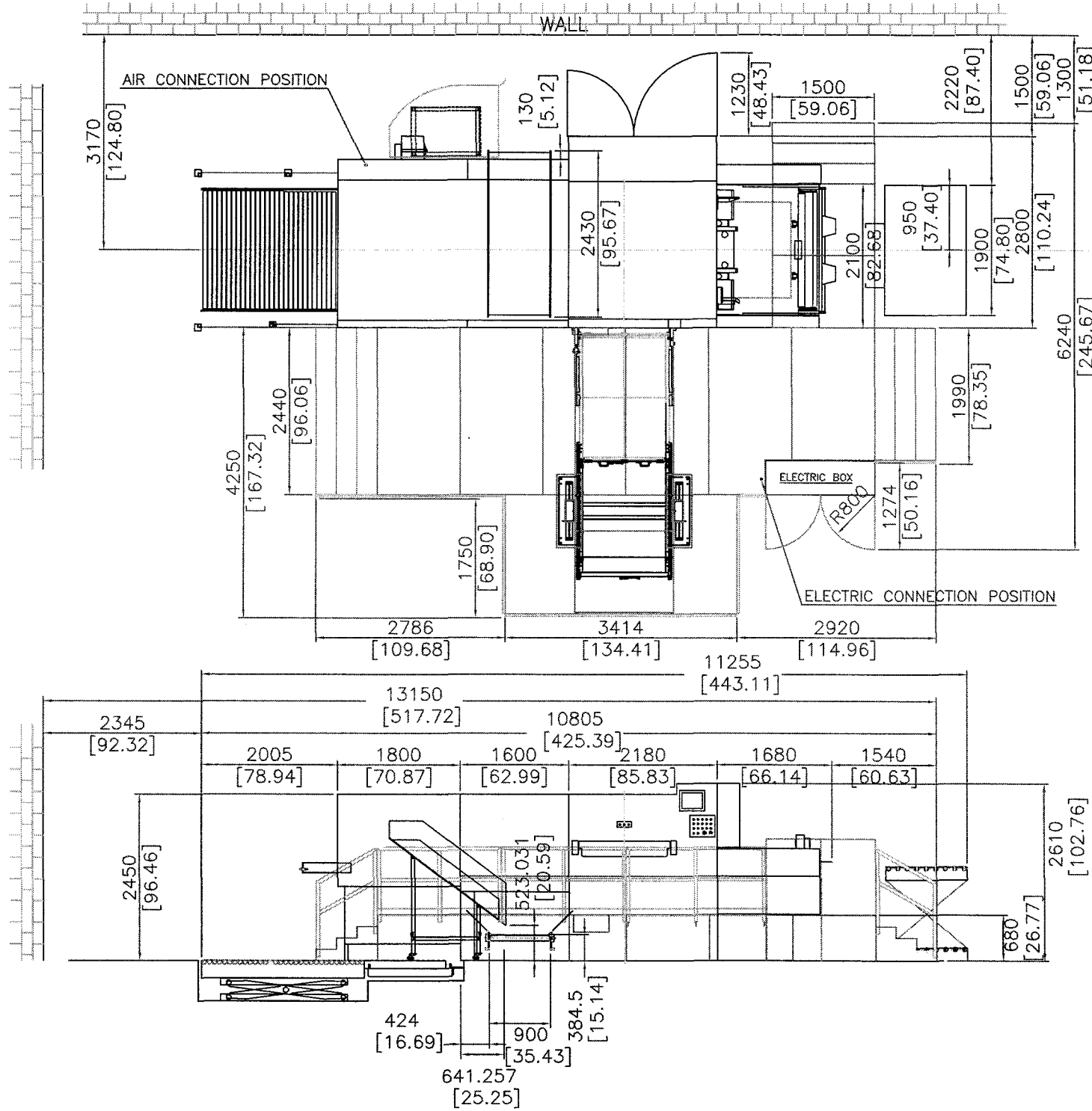
* MACHINE LAYOUT (YT-1700 SII)

Revised 10/17/09 EC

WALL

WALL

WALL



ELECTRIC SPECIFICATION

1. VOLTAGE : 480V 60Hz THREE-PHASE
2. POWER : 50kw 75 Amps

AIR SPECIFICATION

1. PRESSURE : 90 PSI 15 CFM