

Quality  
Innovation

# TWIN AUTO MATIC STITCHER



## KS-TWS 001



### Special Features of Machine

1. Corrugated Cardboard & Plastering (beauty treatment) with single separating action,
2. Used ad both 1 match and 2 match,
3. No trouble and semi permanent with P · L · C method,
4. No experienced technician is required, and any beginner can use easily,
5. Can handle a great deal materials at one time by maximization of production,
6. Manpower and personnel expenses can be reduced,

### Features of SERVO MOTOR & TOUCH SCREEN

1. An iron core maintain interval by setting SERVO MOTOR at once,
2. Operation can be serco driven by SERVO MOTOR' s both axes control,
3. According to working process, turning speed can be controlled with third grade,
4. More convenient setting method by screen,
5. Specified switch operations

**YoungShin**

# TWIN STITCHER

## TWIN AUTO Matic STITCHER



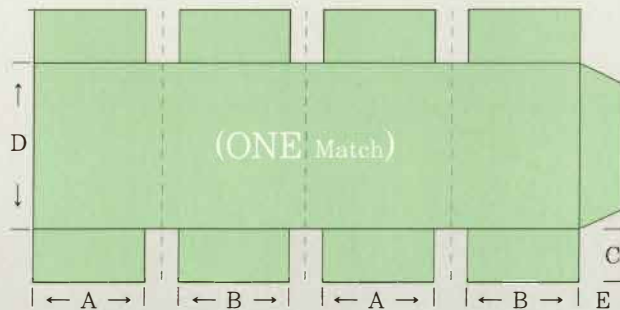
### Specifications of KS-TWS 001

### Specifications of KS-TWS 001

Machine Area	W · L · H (3,000×5,000×1,700)
Weight	5 Ton
R · P · M	Max 380/min
Required Power	13.5 kw
Required Person	2 Persons

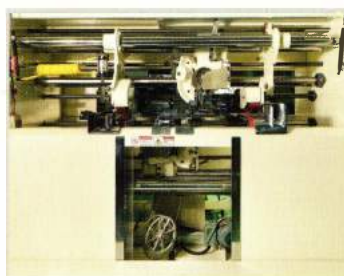
### Scope of work

	Min (m/m)	Max (m/m)
A	110	600
B	240	900
C	100	450
D	145	4,000
E	34	40
A + B	350	1,500
C + D	245	4,700



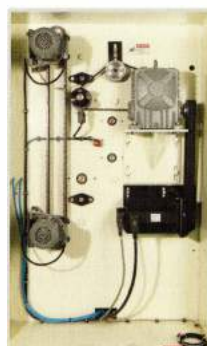
#### TOUCH SCREEN

Enable operator to setup job by screen

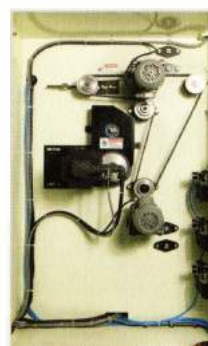


#### TWIN HEAD STITCHER

Can stitch both(up/down) at the same time



Keep distance constant with Servo Motor



Operation can be precised by SERVO MOTER's both axes control.



#### ELETRICAL PANEL

PLC unit



**YoungShin**